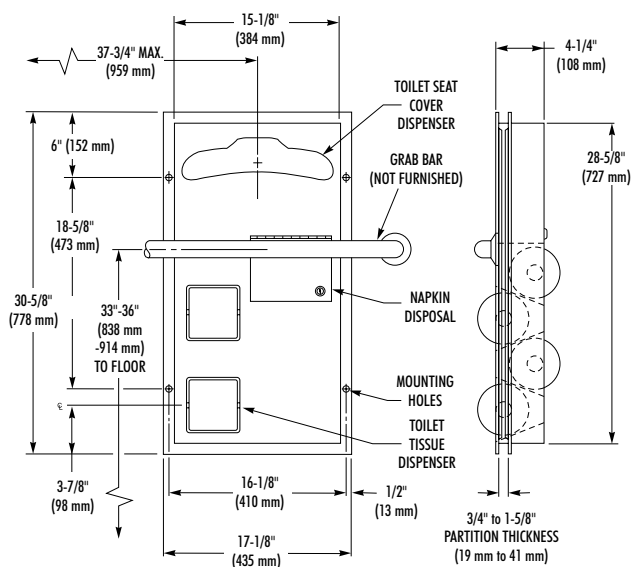
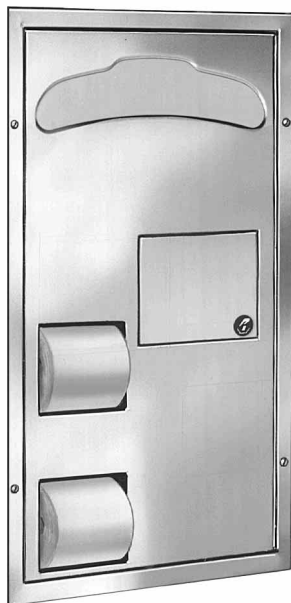
 When installed as specified below, unit meets Barrier-Free requirements

COMBINATION UNIT

- Partition Mounted – Flush One Side For Grab Bar Installation
 - Serves Two Compartments
 - Seat Cover Dispenser
 - Dual Roll Tissue Dispenser
 - Napkin Disposal
- Bradex™**



CONSTRUCTION:

- **FLANGE** fabricated of type 304 (18-8), 22 gauge stainless steel with exposed surfaces in architectural satin finish. Flange of one piece seamless construction, 1" wide with 1/4" return.
- **CABINET** fabricated of type 304 (18-8), 22 gauge stainless steel with exposed surfaces in architectural satin finish. Welded construction with burr-free edges.
- **DOOR** fabricated of type 304 (18-8), 18 gauge stainless steel with full length piano hinge and tumbler lock keyed like other Bradley units.
- **PUSH FLAP DOOR** fabricated of type 304 (18-8), 22 gauge stainless steel with exposed surfaces in architectural satin finish. Self-closing, with heavy duty stainless steel piano hinge.
- **WASTE CONTAINER** fabricated of type 304 (18-8), 22 gauge stainless steel. 1.2 gal. capacity.
- **SPINDLES** of polyethylene, non-removable by user.

CAPACITY:

Toilet Seat Cover Dispensers - 1,000 standard single-fold or half-fold toilet seat covers (500 per side); Toilet Tissue Dispensers - four standard core toilet tissue rolls through 5" in diameter.

OPERATION:

Hinged access door permits servicing of components from one side.

INSTALLATION:

Mounts in partition of toilet compartment for physically handicapped. One side flush against partition allows clearance for grab bar (not included) across front of unit. Requires partition opening 15-1/2"W x 28-7/8"H. Top of partition opening 3'-9" above finished floor and centerline 3' 1-3/4" from rear wall (for correct grab bar installation). (Location of hole and dimensions should be noted in partition specifications.) Flanges adjustable for partitions from 3/4" to 1-5/8" thick. Remove one flange and install cabinet in partition opening flush against partition. Position flanges on both sides of cabinet and secure with mounting screws (included) at holes provided.

GUIDE SPECIFICATION:

Partition mounted combination unit shall include toilet seat cover dispenser, toilet tissue dispenser, and napkin disposal, and be fabricated of type 304 (18-8), heavy gauge stainless steel with seamless exposed surfaces in satin finish. Door and back panel shall be 18 gauge. Door shall have piano hinge and tumbler lock. Fixed flange shall provide for flush mounting on one side for grab bar installation.

Overall dimensions: 17-1/8"W x 30-5/8"H x 4-1/4"D.

Partition Mounted Combination Unit shall be Bradley Model 5911.