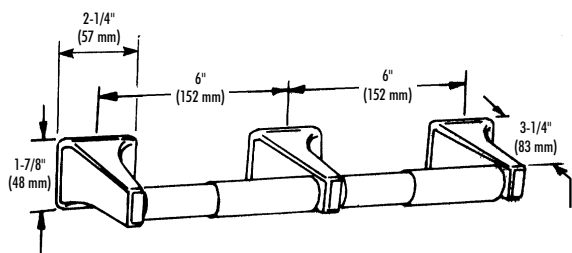
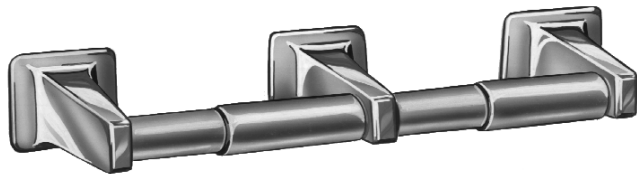


TOILET TISSUE DISPENSER

- Non-Controlled Delivery
- Dual Roll (For Single Roll See Model 508-32)

Bradex™



CONSTRUCTION:

- **BRACKETS** are die cast virgin zinc (Zamac) alloy; copper and nickel plated with highly polished chrome finish.
- **MOUNTING BRACKET** is heavy gauge plated steel.
- **SPINDLES** fabricated of chrome plated plastic.

CAPACITY:

Two standard core toilet tissue rolls through 4-1/2" in diameter.

OPERATION:

Concealed spring permits spindle to telescope for servicing. Spindle turns freely for non-controlled delivery.

INSTALLATION:

Secure concealed mounting brackets to wall with screws (included). Slip support arms over brackets and secure with concealed set screws.

OPTIONAL FEATURES:

Feature	Suffix
<input type="checkbox"/> Plastic roller	-51

GUIDE SPECIFICATION:

Surface mounted dual roll toilet tissue dispenser shall be chrome plated die cast Zamac with separate wall mounting bracket and hold two standard core toilet tissue rolls.

Overall dimensions: 14"W x 1-7/8"H x 3-1/4"D.

Surface Mounted Dual Roll Toilet Tissue Dispenser shall be Bradley Model 523.