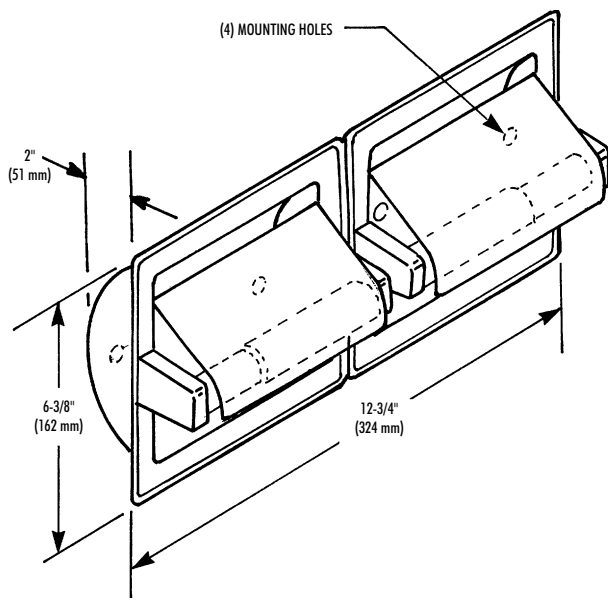
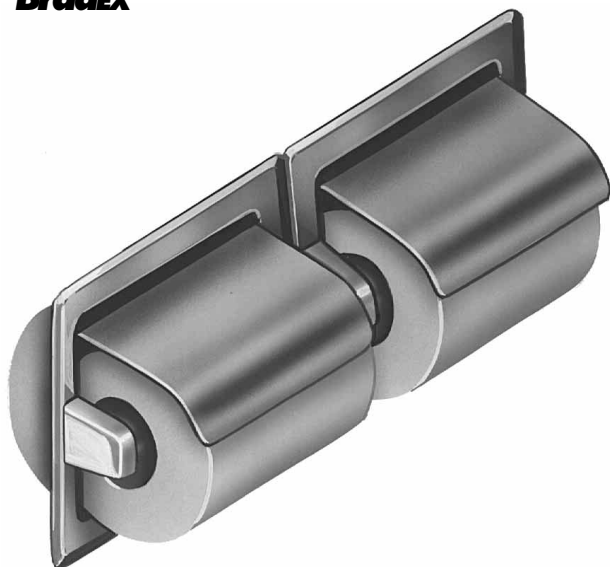


TOILET TISSUE DISPENSER

- Recessed
- Hinged Hood
- Non-Controlled Delivery
- Dual Roll (For Single Roll See Model 5103)

Bradex™



CONSTRUCTION:

- **HOUSING AND HOOD** fabricated of type 304 (18-8) bright polished stainless steel.
- **SPINDLES** fabricated of chrome-plated plastic.

CAPACITY:

Two standard core toilet tissue roll through 5-1/2" in diameter.

OPERATION:

Concealed spring permits spindle to telescope for servicing. Spindle turns freely for non-controlled delivery. Hinged hood prevents unintentional unraveling while keeping top tissue surface clean.

INSTALLATION:

Requires rough wall opening 11-3/4"W x 5-1/4"H x 2"D. Secure to framing with appropriate anchoring devices at holes provided.

OPTIONAL FEATURES:

Feature	Suffix
<input type="checkbox"/> Anti-theft spindle	-52
<input type="checkbox"/> Back clamp for gypsum wallboard mounting	-55
<input type="checkbox"/> Mortar lug for masonry wall mounting	-57

GUIDE SPECIFICATION:

Recessed dual roll toilet tissue dispenser with hinged hood shall be heavy gauge stainless steel and hold two standard core toilet tissue rolls.

Overall dimensions: 12-3/4"W x 6-3/8"H x 2"D.

Recessed Single Roll Toilet Tissue Dispenser shall be Bradley Model 5123.