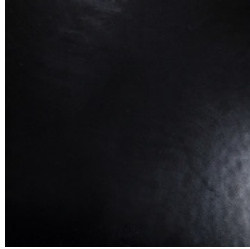


# COLORS & FINISHES - JL Industries - Powder Coat

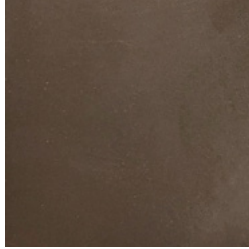
## Fire Extinguisher Cabinets, Roof Hatches, and Access Panels

### GENERAL:

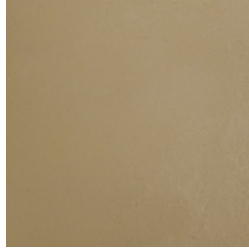
JL Industries products are painted using a VOC-free electrostatic painting process that causes the paint to be attracted to all exposed surface areas of the metal. This method yields a continuous coat of paint both inside and outside of the part providing excellent protection against moisture and dust, giving your product the longest lifespan possible.



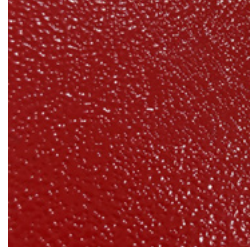
Black | BK\*



Bronze | B\*



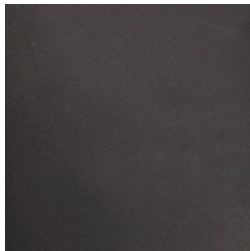
AMS Beige | AB



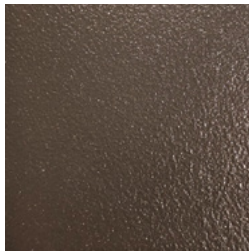
Red Hammertone | RH



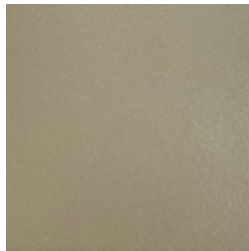
Orange | O



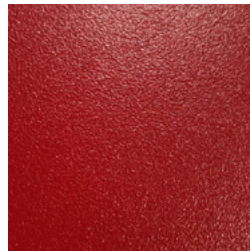
Flat Black | FB



Bronze Textured | BT<sup>§</sup>



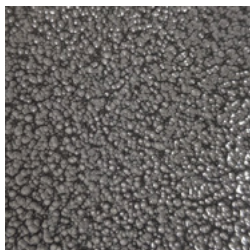
SC Beige | SB



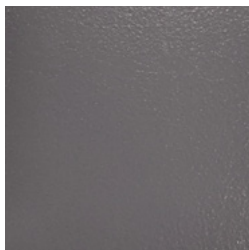
Red Textured | RT<sup>§</sup>



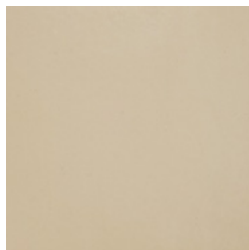
Yellow | Y



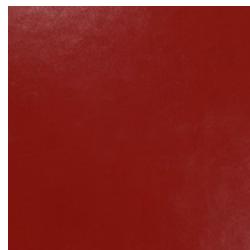
Gray Hammertone | GH\*



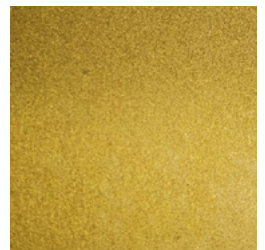
Gray Textured | GT<sup>§</sup>



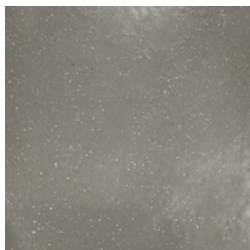
Sand | S



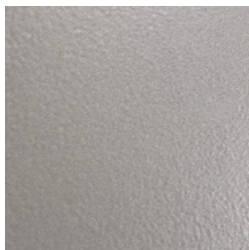
Red | R\*



Brass | BA\*



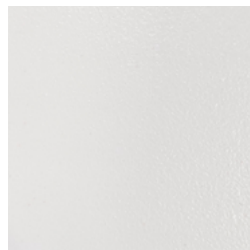
Gray | G



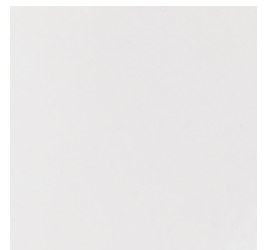
Silver | SI\*



White Hammertone | WH



White Textured | WT<sup>§</sup>



White | W\*

### NOTES:

Most fire extinguisher cabinet and access panel standard powder coat finish is white. Roof hatch standard powder coat is white textured.

This document is for reference only. The colors depicted will be similar to the finished product but should not be used for color matching. Physical color samples are available by contacting customer service

\* Available colors for the SMB cabinet product line.

§ Preferred finishes for Roof Hatches are textured.

**ACTIVAR**  
CONSTRUCTION PRODUCTS GROUP INC.



Distributed by  
www.Ameraproducts.com  
Phone: (800) 608-6568  
Fax: (409) 840-3542  
info@ameraproducts.com

**COLOR & FINISHES**  
**JL Industries Powder Coat**