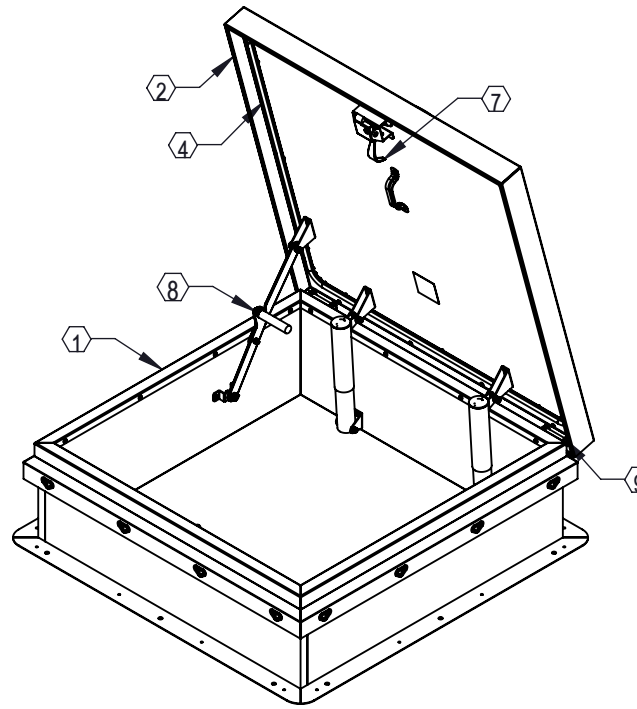
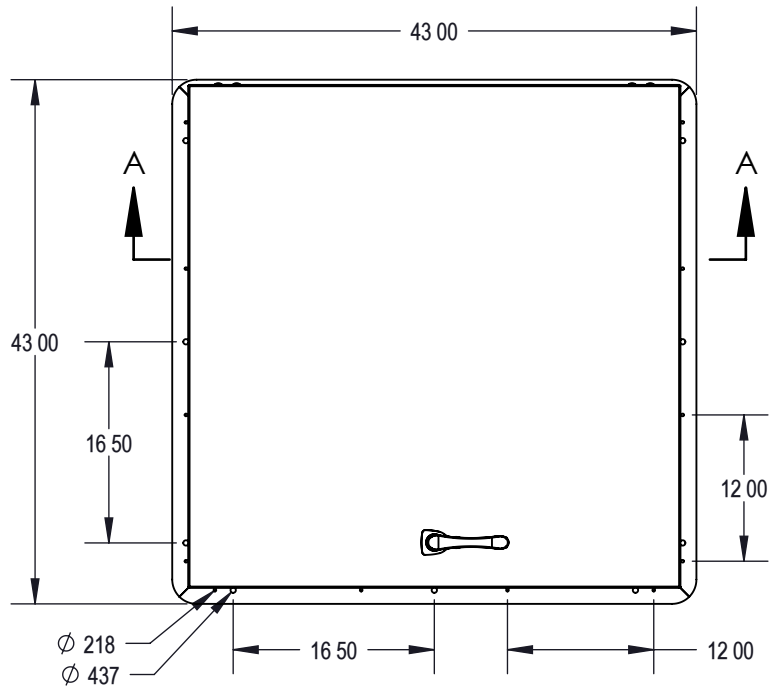


ROOF HATCH - Diamond Series™ - ROOF HATCH, DIAMOND SERIES 36 X 36 (RHG-4) | GALV STEEL, WHITE TEXTURED



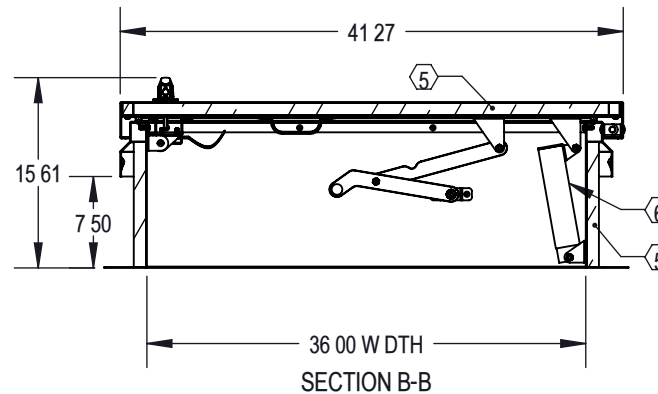
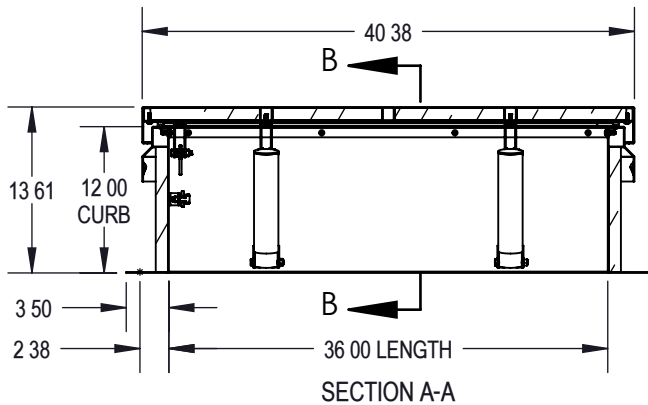
SPECIFICATIONS:

- 1 Curb 14 gauge galvanized steel single wall curb and counterflashing with Diamond Grip
- 2 Cover 14 gauge galvanized steel formed welded cover with 22 gauge liner tested to support a live load of 40psf
- 3 Finish White textured powder coat paint
- 4 Gasket Continuous weatherproof EPDM sponge rubber adhesive-backed seal
- 5 Insulation 1" polyisocyanurate in curb and cover with thermal resistance R-6
- 6 Spring Counterbalanced compression springs contained in clear zinc-plated steel cylinders
- 7 Latch Clear zinc-plated steel slam latch with inside and outside handles and padlock hasps Tested to 50psf wind uplift
- 8 Hold Open Arm Clear zinc-plated automatic locking hold open arm with red vinyl grip for one handed door operation
- 9 Hinge Heavy duty clear zinc-plated steel pintle hinge

Notes

For pitched roofs up to 7:12 mount hinge side parallel to slope
 Door opens 75°
 Clear Opening 25" X 30"
 Weight 162lbs

Diamond Series™ is a trademark of ACPG.



MODEL #: RHDG-4WT



Distributor:		Project:
Contractor:		Approved By:
Date:	Quantity:	Architect:
Scale: 1/16	Pages: 1 OF 1	Drawing #: RHDG-4WT-SUBM TTAL A