

SUBMITTAL: CROWLINE™ FIRE-FX2™ VALVE & HOSE CABINETS - STEEL

Fire-Rated Crownline Cabinets Provide A Wide Selection of Door Styles, Glazing and Sizes. These Durable Cabinets are Designed to Industry Standards for Fire Department Valves, Fire Hose Rack Units and Extinguishers.

Door & Trim: Cold rolled steel with white powder coat finish standard. 1-3/4" Trim on face and door. Flush cabinet doors are mounted in a 5/8" door stop, are attached by a continuous hinge and are equipped with zinc-plated handle and roller catch for all non-locking doors. .

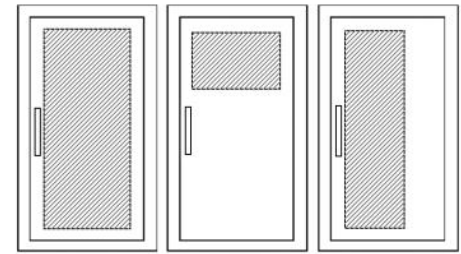
Trim Style and Depth: 1-3/4" face trim on frame and 1-1/4" trim on door. Recessed - 3/8" flat trim. Semi-recessed - 1-1/4" Square Edge or 2-1/2" Rolled Edge. See separate submittal for trimless models.

Tub: The tub is constructed of cold rolled steel with white powder-coat finish standard. Tub forms a flange to cover cut edges of wallboard material. Fire-resistant material is attached to the exterior of the tub.

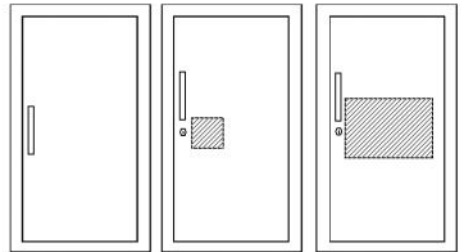
Knockouts: Knockouts are not provided on Fire-Rated Cabinets. Instructions for Knockouts in the field are provided and must be strictly adhered to, in order to maintain fire rating.

Special Features: Models 8015, 8016 and 8017 have a shelf 12" from the bottom of the cabinet and are designed to hold a fire extinguisher plus fire department valve or other accessory. Those models can also be ordered without shelf to allow for lower mounting height of valve piping to meet NFPA14.

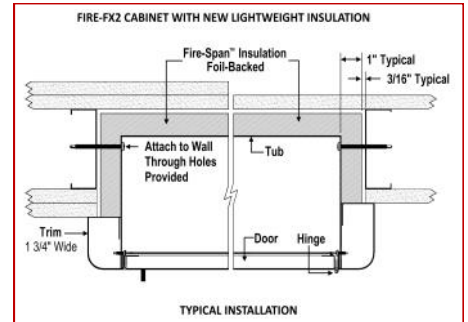
Fire Rating: Fire-FX2™ cabinets are UL listed and labeled as an approved membrane penetration firestop system for up to 2 hours in accordance with UL 1479 (ASTM-E814) and CAN/ULC-S115, when properly installed in a wall assembly according to installation instructions.



F - Full glass with pull
G - Full glass with pull handle and Saf-T-Lok (Not Shown)
D - Horizontal duo panel with pull
E - Horizontal duo panel with pull and Saf-T-Lok (Not Shown)
V - Vertical duo panel with pull
W - Vertical duo panel with pull and Saf-T-Lok (Not Shown)



S21 - Solid with pull
L22 - Solid with pull and Saf-T-Lok
B10 - Acrylic view window with pull, and Saf-T-Lok
A - Center duo panel with pull and Saf-T-Lok
L24 - Solid with cylinder key lock/no pull (L22,24 not shown)



STEP 1: SELECT MODEL NUMBER, TRIM & QUANTITY (Refer to Chart on Page 2)

STEP 2: SELECT DOOR STYLE WITH HANDLE

(Check one box below)

- | | |
|--|---|
| <input type="checkbox"/> F Full Glazing | <input type="checkbox"/> L22 Solid with SAF-T-LOK |
| <input type="checkbox"/> G Full Glazing with SAF-T-LOK | <input type="checkbox"/> V Vertical Duo |
| <input type="checkbox"/> D Horizontal Duo Panel | <input type="checkbox"/> W Vertical Duo with SAF-T-LOK |
| <input type="checkbox"/> E Horizontal Duo Panel with SAF-T-LOK | <input type="checkbox"/> B10 Acrylic View Window with SAF-T-LOK |
| <input type="checkbox"/> A Center Duo Panel with SAF-T-LOK | <input type="checkbox"/> L24 Solid with Cylinder Lock & No Handle |
| <input type="checkbox"/> S21 Solid Door | View Door Styles |

STEP 3: SELECT DOOR GLAZING

(Check one box below)

- | | |
|--|--|
| <input type="checkbox"/> 10 Clear Acrylic | <input type="checkbox"/> 16 Gray Acrylic |
| <input type="checkbox"/> 13 Clear Wire Glass with Wire Glass | <input type="checkbox"/> 17 Clear Tempered Glass |
| <input type="checkbox"/> 15 Bronze Acrylic | <input type="checkbox"/> 18 Laminated Safety Glass |

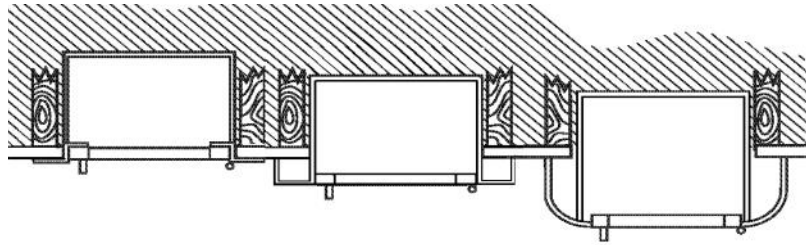
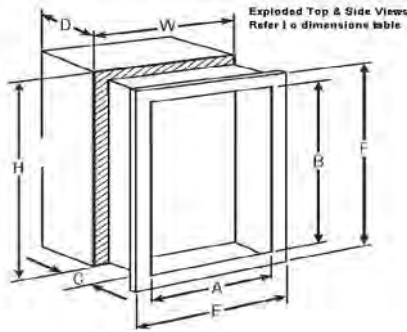
STEP 4: OPTIONAL FEATURES AT ADDITIONAL COST:

- | | | |
|--|---|--|
| <input type="checkbox"/> Optional Tub Color: ___ Black ___ Red | <input type="checkbox"/> (MC) Magnetic Catch—Replaces Roller Catch | <input type="checkbox"/> Fire Extinguisher Lettering: |
| <input type="checkbox"/> Optional Color: ___ Red ___ Black ___ Sand | <input type="checkbox"/> FDVO Decal Fire Department Valve Octagonal 6 x 6" | <input type="checkbox"/> Black Vertical FE Letters LDCVBFE |
| ___ AMS Beige ___ SC Flat Beige ___ Gray | <input type="checkbox"/> 1403 Decal Fire Hose Black/Red Horiz. Letters 4 x 9 | <input type="checkbox"/> Red Vertical FE Letters LDCVRFE |
| ___ Bronze ___ Silver ___ Flat Black | <input type="checkbox"/> LDCHRFDV-R Diecut Fire Dept. Valve Horiz. 10-1/4 x 4-3/8 | <input type="checkbox"/> White Vertical FE Letters LDCVWFE |
| <input type="checkbox"/> CA Commander Alarm | <input type="checkbox"/> LDCVRFDV Diecut Fire Dept Valve Vert. 3/4" x 21 1/2" | <input type="checkbox"/> Black Horizontal FE Letters LDCHBFE |
| <input type="checkbox"/> BA Brigadier Alarm | <input type="checkbox"/> LDCVRFDV-R Diecut Fire Dept Valve Vert. Rever. 3/4" x 21 1/2" | <input type="checkbox"/> Red Horizontal FE Letters LDCHRFE |
| <input type="checkbox"/> Futura "Fire" Handle ___ Mill ___ Red ___ White | <input type="checkbox"/> LDCHRFDV Diecut Fire Department Valve Ascend. 1" x 17" | <input type="checkbox"/> White Horizontal FE Letters LDCHWFE |
| <input type="checkbox"/> PRH Recessed Pull Handle | <input type="checkbox"/> LDCVRFSCV-R Diecut Fire Sprinkler Cont. Valve Vert 3/4" x 18" | <input type="checkbox"/> No Shelf for 8000 Series |
| <input type="checkbox"/> PUCH Polished Chrome Handle | <input type="checkbox"/> Etched Glass or Engraved Metal Lettering (Check Box & Attach Separate Submittal) | |

It is the responsibility of the customer to communicate specifications and product performance requirements that are needed for their application. This document is intended to convey potential product configurations and offerings. It is not to be used to imply or represent a specification or rating, of finished products shipped. Detailed, specific submittals can be created upon request. It is the responsibility of the customer to specify product accordingly to comply with local laws, codes, and ordinances.

<p>JL INDUSTRIES</p>	Distributed by www.Ameraproducts.com Phone: (800) 608-6568 Fax: (409) 840-5545 info@ameraproducts.com	Distributor: _____	Quantity: _____
		Contractor: _____	Approved By: _____
		Model #: _____	Architect: _____
		Project: _____	Date: _____
<p>Headquarters: 9702 Newton Ave S, Bloomington, MN 55431 Ph: 800-554-6077 Email: sales@activar-cpg.com www.activar-cpg.com</p> <p>Manufacturing: Bloomington, MN & Commerce, CA Warehouses: See Website for Locations 5/25/2023</p>			

SUBMITTAL: CROWLINE™ FIRE-FX2 VALVE & HOSE CABINETS - STEEL PG 2 OF 2



**3/8" (.9cm)
FLAT TRIM**

**1-1/4" (3.8cm)
SQUARE TRIM**

**2-1/2" (6.4cm)
ROLLED EDGE**

CABINET PROFILES

TRIM & DOOR MATERIAL & SERIES		TUB I.D. W x H x D in Inches			FRAME O.D.		RECESSED WALL OPENING DIMS.			RECOMMENDED HOSE RACK, FIRE DEPARTMENT VALVES & EXTINGUISHERS
QTY #	TRIM STYLE	A	B	C	E	F	Width	Height	Depth	
Cabinets with Hose Rack & Extinguisher or Fire Department Valve										
6015	FLAT TRIM 3/8"	24	30	6	27 3/8	33 3/8	26 5/16	32 5/16	6 15/16	HOSE RACK: 1- 1/2" x 1-1/2" Hose Rack Unit with 50 or 75' Hose (HRA:050B, 050CH, 075B, 075CH) & Cosmic 2½ or Galaxy 2½- 5 lb Extinguisher
6016	1-1/4" SQUARE EDGE	24	30	6	27 3/8	33 3/8	26 5/16	32 5/16	5 15/16	
6017	2-1/2" ROLLED EDGE	24	30	6	27 3/8	33 3/8	26 5/16	32 5/16	4 11/16	
6215	FLAT TRIM 3/8"	24	34 3/4	6	27 3/8	38 1/8	26 5/16	37 1/16	6 15/16	HOSE RACK: 1- 1/2" x 1-1/2" Hose Rack Unit - 100' Hose (HRA 100B, HRA100CH) & Cosmic 2½ or Galaxy 2½- 5 lb Extinguisher
6216	1-1/4" SQUARE EDGE	24	34 3/4	6	27 3/8	38 1/8	26 5/16	37 1/16	5 15/16	
6217	2-1/2" ROLLED EDGE	24	34 3/4	6	27 3/8	38 1/8	26 5/16	37 1/16	4 11/16	
6115	FLAT TRIM 3/8"	24	30	8	27 3/8	33 3/8	26 5/16	32 5/16	8 15/16	HOSE RACK: 2-1/2" x 1-1/2" Hose Rack Unit 50 or 75' Hose (HRA050B-2.5, HRA075B-2.5)
6116	1-1/4" SQUARE EDGE	24	30	8	27 3/8	33 3/8	26 5/16	32 5/16	7 15/16	
6117	2-1/2" ROLLED EDGE	24	30	8	27 3/8	33 3/8	26 5/16	32 5/16	6 11/16	
6415	FLAT TRIM 3/8"	24	34 3/4	8	27 3/8	38 1/8	26 5/16	37 1/16	8 15/16	HOSE RACK: 2-1/2" x 1-1/2" Hose Rack Unit 100' Hose (HRA100B-2.5)
6416	1-1/4" SQUARE EDGE	24	34 3/4	8	27 3/8	38 1/8	26 5/16	37 1/16	7 15/16	
6417	2-1/2" ROLLED EDGE	24	34 3/4	8	27 3/8	38 1/8	26 5/16	37 1/16	6 11/16	
6615	FLAT TRIM 3/8"	24	38 3/4	8	27 3/8	42 1/8	26 5/16	41 1/16	8 15/16	HOSE RACK: 2-1/2" x 1-1/2" Hose Rack Unit 125' Hose (HRA125B-2.5)
6616	1-1/4" SQUARE EDGE	24	38 3/4	8	27 3/8	42 1/8	26 5/16	41 1/16	7 15/16	
6617	2-1/2" ROLLED EDGE	24	38 3/4	8	27 3/8	42 1/8	26 5/16	41 1/16	6 11/16	
6315	FLAT TRIM 3/8"	30	30	8	33 3/8	33 3/8	32 5/16	32 5/16	8 15/16	HOSE RACK & FD VALVE OR EXTINGUISHER: 1-1/2" OR 2-1/2" Valve; 50' or 75' Hose Rack Unit Plus FD Valve, Cosmic or Galaxy Extinguisher
6316	1-1/4" SQUARE EDGE	30	30	8	33 3/8	33 3/8	32 5/16	32 5/16	7 15/16	
6317	2-1/2" ROLLED EDGE	30	30	8	33 3/8	33 3/8	32 5/16	32 5/16	6 11/16	
6515	FLAT TRIM 3/8"	32 3/4	34 3/4	8	36 1/8	38 1/8	35 1/16	37 1/16	8 15/16	HOSE RACK & FD VALVE OR EXTINGUISHER: 1-1/2" OR 2-1/2" Valve, 100' Hose Rack Unit Plus FD Valve, Cosmic or Galaxy Extinguisher
6516	1-1/4" SQUARE EDGE	32 3/4	34 3/4	8	36 1/8	38 1/8	35 1/16	37 1/16	7 15/16	
6517	2-1/2" ROLLED EDGE	32 3/4	34 3/4	8	36 1/8	38 1/8	35 1/16	37 1/16	6 11/16	
7215	FLAT TRIM 3/8"	32 3/4	38 3/4	8	36 1/8	42 1/8	35 1/16	41 1/16	8 15/16	HOSE RACK & FD VALVE OR EXTINGUISHER: 1-1/2" OR 2-1/2" Valve, 125' Hose Rack Unit Plus FD Valve, Cosmic or Galaxy Extinguisher
7216	1-1/4" SQUARE EDGE	32 3/4	38 3/4	8	36 1/8	42 1/8	35 1/16	41 1/16	7 15/16	
7217	2-1/2" ROLLED EDGE	32 3/4	38 3/4	8	36 1/8	42 1/8	35 1/16	41 1/16	6 11/16	
Cabinets for Fire Department Valves										
8515	FLAT TRIM 3/8"	18	18	8	21 3/8	21 3/8	20 5/16	20 5/16	8 15/16	FIRE DEPARTMENT VALVE: 1-1/2" or 2-1/2" Fire Department Valve with Cap and Chain
8516	1-1/4" SQUARE EDGE	18	18	8	21 3/8	21 3/8	20 5/16	20 5/16	7 15/16	
8517	2-1/2" ROLLED EDGE	18	18	8	21 3/8	21 3/8	20 5/16	20 5/16	6 11/16	
8415	FLAT TRIM 3/8"	18	18	10	21 3/8	21 3/8	20 5/16	20 5/16	10 15/16	DUAL SIDE BY SIDE FIRE DEPARTMENT VALVE & EXTINGUISHER OR 2 FIRE DEPARTMENT VALVES: 1-1/2" or 2-1/2" Fire Department Valve with Cap and Chain Plus Cosmic or Galaxy 2-1/2-10 lb Extinguisher
8416	1-1/4" SQUARE EDGE	18	18	10	21 3/8	21 3/8	20 5/16	20 5/16	9 15/16	
8417	2-1/2" ROLLED EDGE	18	18	10	21 3/8	21 3/8	20 5/16	20 5/16	8 11/16	
8715	FLAT TRIM 3/8"	26	26	8	29 3/8	29 3/8	28 5/16	28 5/16	8 15/16	DUAL EXTINGUISHER & FD VALVE CABINET WITH SHELF: Shelf is 12" from bottom. Cosmic or Galaxy Extinguisher
8716	1-1/4" SQUARE EDGE	26	26	8	29 3/8	29 3/8	28 5/16	28 5/16	7 15/16	
8717	2-1/2" ROLLED EDGE	26	26	8	29 3/8	29 3/8	28 5/16	28 5/16	6 11/16	
8615	FLAT TRIM 3/8"	26	26	10	26 1/4	26 1/4	28 5/16	28 5/16	10 15/16	DUAL EXTINGUISHER & FD VALVE CABINET WITH SHELF: Shelf is 12" from bottom. Cosmic or Galaxy Extinguisher
8616	1-1/4" SQUARE EDGE	26	26	10	26 1/4	26 1/4	28 5/16	28 5/16	9 15/16	
8617	2-1/2" ROLLED EDGE	26	26	10	26 1/4	26 1/4	28 5/16	28 5/16	8 11/16	
8015	FLAT TRIM 3/8"	16	40	9	19 3/8	43 3/8	18 5/16	42 5/16	9 15/16	DUAL EXTINGUISHER & FD VALVE CABINET WITH SHELF: Shelf is 12" from bottom. Cosmic or Galaxy Extinguisher
8016	1-1/4" SQUARE EDGE	16	40	9	19 3/8	43 3/8	18 5/16	42 5/16	8 15/16	
8017	2-1/2" ROLLED EDGE	16	40	9	19 3/8	43 3/8	18 5/16	42 5/16	7 11/16	

ADA Cabinet Mounting Height: Standard Pull on G, E, W, L22, A and B Door Styles with Saf-T-Lok are 3 5/8" Higher than Door Center, so Allow for that When Mounting Cabinet. Standard Pull with No Lock or Doors with Recessed Pull are Centered on Door. 8000 Series can also be ordered without shelf to allow for lower mounting height of valve piping to meet NFPA14.

