



CORNER GUARD CATALOG

DIVISION 10 26 13

CORNER GUARDS

Distributed by
www.Ameraproducts.com
Phone: (800) 608-6568
Fax: (409) 840-3542
info@ameraproducts.com



ACTIVAR CONSTRUCTION PRODUCTS GROUP INC.



SGV SERIES: VINYL CORNER GUARD SYSTEM

Add beauty and function to interior walls with the surface-mounted SGV. The SGV Vinyl Corner Guard System is installed on the surface of the wall by a continuous aluminum retainer with a high-impact vinyl acrylic cover available in a wide range of colors.

PRODUCT DETAILS:

Retainer Material: .060" (1.52mm) Aluminum 6063-T5

Cover Material: .078" (1.98mm) Vinyl Acrylic

Retainer Finish: Mill

Cover Finish: Pebble Grain with Micro-Chek® antimicrobial agent. See color chart for options.

Construction: Continuous aluminum retainer with high-impact vinyl acrylic cover and top & bottom endcaps.

Corner Type: Square (S)

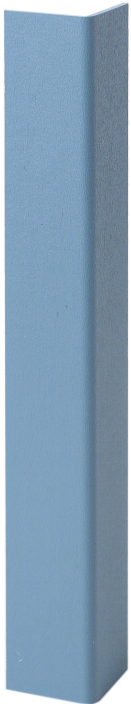
Angle: 90°

Mounting: Install with screws provided, through aluminum retainers and endcaps to wallboard surface.

Flame Resistance: Meet Class A fire rating. Complies with NFPA 101 for interior finish materials. Smoke developed less than 450° and flame spread of 25 or less in accordance with ASTM E84.

Length: 48" standard - Includes endcaps. Maximum: 20'

Wing Width: 2"



CGVA SERIES: VINYL CORNER GUARD

Ideal for protecting corners when remodeling, the surface-mounted CGVA can be adhered or mechanically fastened to the wall. These low profile corner guards are made of high-impact vinyl, with an antimicrobial agent.

PRODUCT DETAILS:

Material: .078" (1.98mm) Vinyl Acrylic

Finish: Pebble Grain with Micro-Chek® antimicrobial agent. See color chart for options.

Angle: 90°

Mounting: Adhesive strips

Flame Resistance: Meet Class A fire rating. Complies with NFPA 101 for interior finish materials. Smoke developed less than 450° and flame spread of 25 or less in accordance with ASTM E84.

Length: 48" standard. Maximum: 16'

Wing Width: .75" and 1.5". Edges of wings are tapered.

ADDITIONAL OPTIONS:

Mounting Tape Applied





COLOR SELECTION FOR SGV AND CGVA SERIES:

For the Ultimate in a Finished Corner Guard Look, the SGVA Provides High-Impact Performance with a Wide Color Selection to Match the Décor. Designed for Full Length Applications.

Crisp: 110	White: 60	Pearl White: 111	Cream: 62	Linen: 61	Delicate White: 63	Pearl: 64	Ivory: 65
Fog: 105	Mist: 85	Tan: 66	Sandy Tan: 117	Shark: 81	Pumice: 84	Dark Cream: 67	Wheat: 69
Shadow: 122	Silver: 113	Timberwolf: 112	Koala: 114	Oyster: 80	Stone: 92	Cashmere: 73	Silk: 71
Dark Stone: 106	River Stone: 118	Elephant: 115	Abalone: 116	Smoke: 120	Soda: 83	Sand: 75	Suede: 74
Storm: 125	Fray: 107	Lava: 93	Gray Bear: 121	Taupe: 119	Khaki: 82	Brown: 77	Mocha: 76
Charcoal: 108	Dolphin Gray: 123	Dusk: 129	Anchor: 124	Gravity: 87	Tumbleweed: 86	Nutmeg: 90	Coffee: 91
Black: 109	Sea: 126	Waterfall: 127	Breeze: 128				

CGL SERIES: CLEAR POLYCARBONATE CORNER GUARD

Clear LEXAN® Polycarbonate corner guard for light to medium impact use.

PRODUCT DETAILS:

Material: Clear LEXAN® Polycarbonate

Angle: 90°, 135° (Only in 2-½" wing).

Mounting: Screws and pre-drilled holes.

Flame Resistance: None

Length: 48" or 96" standard.

Wing Width: ¾", 1-⅛", 1-½", 2", & 2-½".

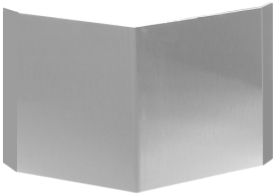
ADDITIONAL OPTIONS:

Length, Wing Length

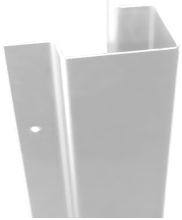




CGSS90-2.5E-48



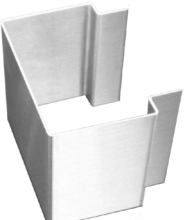
CGSS135-3-48



CGSS6-3E-R8-H-FM



CGSS 6-3 E-48-H-



CGSS 6-3-96

CGSS SERIES: STAINLESS STEEL CORNER GUARDS

Protect corners with stainless steel corner guards. Designed for Medium to Heavy Impact protection and available in any width and lengths to 108". These corner guards are excellent for high traffic areas in restaurants, commercial kitchens, hospitals and schools.

PRODUCT DETAILS:

Material: 18 Gauge Stainless Steel Type 304

Standard Finish: US 32D - Satin Finish

Angle: 90° or 135° with 1/8" radius

Edges: Standard 1/2" eased vertical edges with top radius corners and bottom square corners

Mounting: Screws and pre-drilled holes, construction adhesive or adhesive strips

Flame Resistance: Non-flammable

Length: 48" standard. Up to 108".

Wing Width: 1-1/2", 2", 2-1/2", 3", & 3-1/2". Edges are eased and top corners are radiused

ADDITIONAL OPTIONS:

Other Finishes: #7 Polished.

Bullnose Corner, Custom Angles and Wings, 14 or 16 Gauge, Flush-Mount Recessed

CGSS ENDWALL SERIES: STAINLESS STEEL CORNER GUARDS

Stainless steel corner guards to protect endwalls in industrial, medical & commercial buildings.

PRODUCT DETAILS:

Material: 18 Gauge Stainless Steel Type 304

Standard Finish: US 32D - Satin Finish

Angle: Standard - Both 90°

Edges: Standard 1/2" eased vertical edges with top radius corners and bottom square corners

Mounting: Screws and pre-drilled holes, construction adhesive or adhesive strips.

Flame Resistance: Non-flammable

Length: 48" standard". Up to 108"

Wing Width: Specify

Wall Width: Specify

ADDITIONAL OPTIONS:

Bullnose Corner, Non Eased Edge, Custom Angles, 14 or 16 Gauge, Flush-Mount Recessed



ACTIVAR CONSTRUCTION PRODUCTS GROUP INC.

