

THE FLEXIBILITY TO CREATE VISUAL DISPLAY SYSTEMS WITH QUALITY AND PERFORMANCE THAT EXCEED EXPECTATIONS

Since 1959 our goal has been to provide visual display products and services that meet and exceed aesthetic and performance requirements. Only ASI Group designs and manufactures high quality visual display products that are easy to install and require little maintenance. All inquiries welcome and if you don't see a solution here please do not hesitate to reach out to us. Welcome to the new ASI Group—the world's leading manufacturer of partitions, washroom accessories, lockers, and visual display products. Explore the new standard for basis of design in Visual Display Products.

HOW TO ORDER

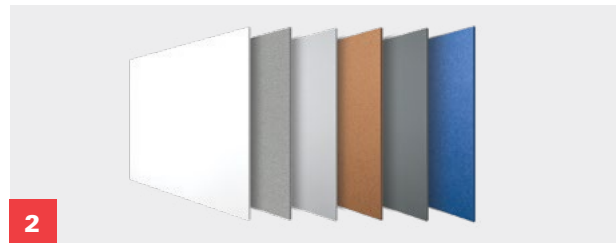


1

Pick your Frame

Choose a trim system that meets your aesthetic and performance requirements.

P. 4-5 **Trim Systems**



2

Pick your Surface

Select from a variety of writing and tackboard surface options.

P. 6-7 **Porcelain Writing Surfaces**

P. 8-9 **Glass Writing Surfaces**

P. 11 **Cork Tackboards**

P. 11 **Fabric Tac® Tackboards**

P. 11 **Vinyl Tac Tackboards**

P. 12-13 **Forbo® Tackboards**



WE ARE LASER FOCUSED ON DELIVERING EXACTLY WHAT YOU NEED—WHERE AND WHEN YOU NEED IT.

ASI Group's Global Reach—see how on pages 22-23.



U.S. Green Building Council (USGBC)
ASI Visual Display Products is committed to continuously delivering the most environmentally friendly products to the global marketplace.



3

Pick your Configuration

Select from vertical or horizontal sliding configurations that can be delivered pre-framed or unassembled.

P. 16-17 Sliders

P. 15 Configurations

P. 22 Sizing Chart



4

Pick your Accessories

Choose from a variety of display and marker rails, accessories, directories, cases, and mobile units.

P. 19 Coat Racks

P. 20 Directories & Cases

P. 14 Mobile Units

P. 21 Rails & Accessories

P. 18 Installation Guide

Distributed by
www.Ameraproducts.com
Phone: (800) 608-6548
Fax: (409) 840-3542
info@ameraproducts.com

ASI Visual Display
Products



Distributed by
www.AmeraProducts.com
Phone: (800) 608-6548
Fax: (409) 840-5540
info@ameraproducts.com

TRIM SYSTEMS



ELITE REVEAL

The floating clean-line trim system

The limitless versatility of our Elite Reveal framing system is unmatched. Our innovative 1/8" reveal comes standard on all installations and is available in any number of finishes. When your design calls for the coolness of minimal aluminum framing, any number of materials can be used to create striking, crisp, clean installations that float off your finished wall surface.

- Minimal Framing
- 1/8" Reveal



SERIES 9100

Slim Trim

Our slim and durable framing system that's available with a square or radius corner. The Series 9100 is available in 5 standard sizes and custom sizes.

- Radius corner is available in clear anodized aluminum
- Square corner is available in clear anodized aluminum
- Sophisticated narrow face trim
- 9/32" exposed frame

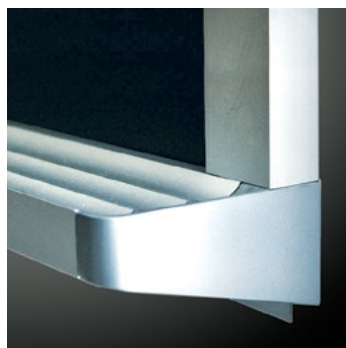


SERIES 9800

The subtle and elegant trim system

The most popular trim system, engineered to provide a permanent, direct-to-the-wall installation, at an economical price. With its striking 3/4" face, this series was designed for the discriminating designer who desires an elegant style trim that does not overpower the room but complements and harmonizes with modern decor schemes.

- Subtle Framing
- 3/4" Exposed Frame
- Available as a knock-down, multipanel option for customizable assembly on-site.



SERIES 9300

The bold and heavy-duty trim system

A prominent, heavy-duty framing system, providing a permanent application with a retro flair. With its 1-1/2" wide face protruding 1/4" off the finished writing surface, Series 9300 units are available in a variety of finishes.

- Bold, Heavy-Duty Construction
- 1-1/2" Exposed Frame

WRITING SURFACE OPTIONS

PORCELAIN SURFACES

ASI Porcelain writing surfaces are made for busy offices and boisterous classrooms, providing a super-smooth writing surface that erases like magic and will not scratch, stain, or fade for as long as it is in use—guaranteed. It is the most popular writing surface for chalkboards and whiteboards, providing superior writability, durability, and erasability.



Shipped In
48
HOURS

Available to be
shipped in 48 hours.

Sizes included in 48 hour
offering are:

- 4' X 4'
- 4' X 6'
- 4' X 8'
- Series 9800 boards come framed all around with flat or angled trays. Other accessories can be specified as required.

- Lifetime warranty
(on writing surface for the life of the building)
- Can be written on with dry-erase markers
- Optimum erasability—and easy to maintain
- Scratch, bacteria, chemical, and fire resistant—will not combust or release toxic fumes in the event of fire
- Accepts magnetic accessories
- Greater color contrast
- Standard is high gloss white
- Premium color finishes available
- Colorfast—will not fade
- Safe and clean—releases no harmful chemicals into the environment
- Available in Series 9800, 9300, 9100 Radius and Square, Elite Reveal and Knock Down frames

Distributed by
www.Ameraproducts.com
Phone: (800) 608-6548
Fax: (409) 840-3543
info@ameraproducts.com



PORCELAIN COLOR SELECTION:

GLOSS MARKERBOARDS



White
High Gloss 29



White
Low Gloss 29L

ULTRA MATTE PORCELAIN



Green
Ultra Matte 06



Black
Ultra Matte 11

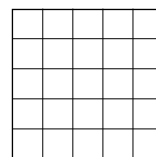
Chalk can be used to write on these porcelain surfaces.

Actual colors may vary slightly from those shown due to limitations in the printing process.

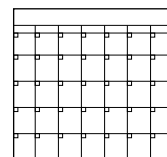
CUSTOM GRAPHIC BOARDS*:



Music Lines



Graph Coordinates



Calendar

*Other custom graphics available—please call for additional information.

ASI Visual Display
Products

Distributed by
www.AmerapProducts.com
Phone: (800) 608-6568
Fax: (409) 840-3540
info@ameraproducts.com

WRITING SURFACE OPTIONS

GLASS SURFACES

The performance of ASI Glass Markerboards is unmatched in the industry, allowing designers and architects the ability to showcase interiors with this striking product line. Its clean lines and superior erasability are achieved using only ASI's UltraClear™, 1/4" tempered glass, also known as museum glass. ASI Glass Markerboards are available in 3 framing styles and may be optionally specified with a backing that allows for magnetic applications when used with rare earth magnets.

Features:

- All glass tempered
- Sizes up to 82" x 142"
- 1/4" low iron tempered UltraClear™ glass
- Custom graphics available
- Optional magnetic backing



FRAMELESS GLASS
with edge grip stand-offs



FRAMELESS GLASS
with hidden Z track bracket



FRAMED GLASS
with hidden Z track bracket



GLASS COLOR SELECTION:

STANDARD COLOR

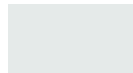


White 6529

OPTIONAL COLORS



Magenta 6527



Pale Blue 6551



Taupe 6535



Red Orange 6562



Spring Green 6543



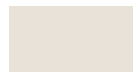
Winter Gray 6558



Winter Blue 6523



Light Gray 6508



Cream 6573



Purple 6520

Unlimited color selection available, please contact us for pricing at 905.822.4287 or email us at estimating@asi-visualdisplayproducts.com (for US) or estimating@asigroup-canada.com (for Canada).

Colors subject to change.

Actual colors may vary slightly from those shown due to limitations in the printing process.

ASI Visual Display
Products

Distributed by
www.Ameraproducts.com
Phone: (800) 608-6548
Fax: (409) 840-3543
info@ameraproducts.com



TACKBOARD SURFACE OPTIONS



NATURAL CORK

There is no other material, either man-made or natural, with all the properties and characteristics that are unique to cork: light-weight, rot resistant, compressible and recoverable, expandable, fire resistant in its natural state, impermeable, soft and buoyant. Because of this unparalleled combination of properties, cork raw material has a wide variety of applications. With its light-weight honeycomb structure and its flexible membrane, cork is the ideal material for bulletin boards.

Available in:

- Ready to mount rigid boards up to 5' x 10' (see page 24 for size details)
- Optionally available in 4' wide rolls, up to 105' long
- Series 9800, and Knock Down frames

Features:

- Environmentally friendly
- Renewable resource



Available to be shipped in 48 hours.

Sizes included in 48 hour offering are:

- 4' X 4'
- 4' X 6'
- 4' X 8'
- Series 9800 4 sided



FABRIC TAC**

Our new "Eco Fabric" is made from 100% recycled polyester crepe, designed for recyclability. It's a subtle intermingling of colors across a clean, refined surface that offers a classic look that is ideal for a wide range of end uses. Performance characteristics allow for optimum functionality, and the material is resistant to 100,000 double rubs. FabricTac® boards are available in Series 9800, 9100 Radius and Square, and Knock Down frames.

FABRIC COLOR SELECTION:



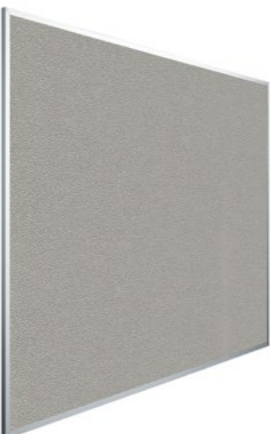
White

Black

Bluestone

Camel

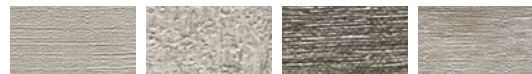
Red



VINYL TAC

Vinyl has a lightly embossed simple, timeless, and classic woven effect that is colored in shades of dulled red and blue-gray tones. Its 20 oz weight makes it an incredibly durable finish for bulletin boards that offer superior cleaning and design flexibility, while maintaining fire resistance. Vinyl Tac boards are available in Series 9800 and Knock Down frames.

VINYL COLOR SELECTION:



White Irish Linen

Salem Grey

Embassy Charcoal

Embassy Taupe

Additional colors available, please contact us for pricing and availability. Colors subject to change.

**Fabric Tac® available in a wide range of colors from virtually any fabric manufacturer including Guilford, Maharam, Knoll®, and Victor. Actual colors may vary slightly from those shown due to limitations in the printing process.*



Available in:

- Ready to mount rigid boards up to 5' x 12'
(see page 24 for size details)
- 1/4" (6mm) thick
- Series 9800 and Knock Down frames

FORBO®

Forbo® Bulletin Board is produced from natural and renewable raw materials. A combination of oxidized linseed oil, resin, and finely ground cork gives Forbo® its flexibility and resilience. This combination results in a product with exceptional durability and a sustainable footprint.

Self-healing properties

Its strength and resilience make Forbo® the ideal material for pin boards, notice boards, and all other surfaces where ideas and information are exchanged. The board material retains its grip and doesn't crumble like traditional soft boards as the pinholes close after extraction of the pins.

Practical & hygienic

Forbo® does not attract dust and has bacteriostatic properties. This makes it a practical solution in classrooms and a hygienic choice in healthcare environments where "get well" messages can be pinned behind the bed.



FORBO® BULLETIN BOARD COLOR SELECTION:

The choice for environments where a functional, washable, tackable surface is needed.

Standard Colors



Duck Egg
2162

*Potato Skin
2182

Poppy Seed
2204

Oyster Shell
2206



Black Olive
2209

*5' High boards are available in:

- 2182 Potato Skin
- 2186 Blanched Almond
- 2166 Nutmeg Spice

Optional Colors



*Nutmeg Spice
2166

*Blanched Almond
2186

Brown Rice
2187

Cinnamon Bark
2207



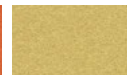
Mushroom Medley
2208



Hot Salsa
2210



Tangerine Zest
2211



Fresh Pineapple
2212



Baby Lettuce
2213*



Blue Berry
2214

Forbo® is a registered trademark of Forbo Flooring Systems.
Actual colors may vary slightly from those shown due to
limitations in the printing process.

ASI Visual Display
Products

Distributed by
www.Ameraproducts.com
Phone: (800) 608-6548
Fax: (409) 840-5541
info@ameraproducts.com

MOBILE UNITS



MOBILE UNITS

Mobile Units are constructed of welded steel framing with a durable baked enamel paint finish. Ball type casters are installed to each foot assembly to provide ease of movement.

ASI Mobile Units are offered in 2 surfaces providing various combinations of markerboards and tackboards to suit your individual requirements.

Available in:

- All panel types
- All units double sided
- 4' x 6', 4' x 8' (*horizontal*) and 6' x 4' (*vertical*) sizes
- Powder coated gray frames
- Silent ball type caster—with brakes



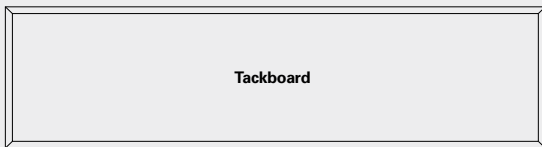
CONFIGURATIONS / SIZES & HOW TO ORDER

CONFIGURATIONS

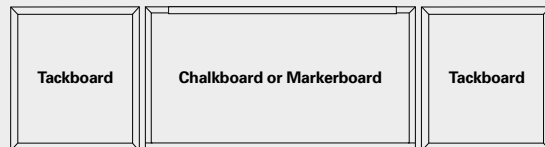
TYPICAL MARKERBOARD, CHALKBOARD, & TACKBOARD CONFIGURATIONS:



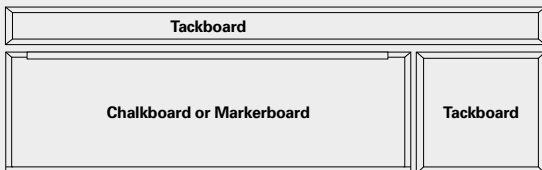
Type A



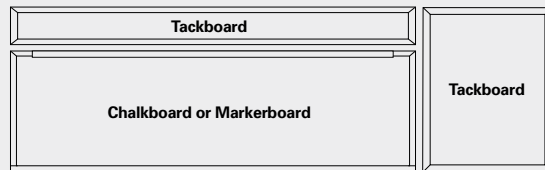
Type CO



Type C



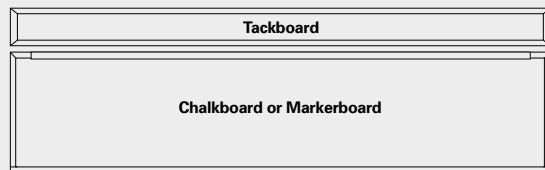
Type ER (Tackboard on Right)—Type EL (Tackboard on Left)



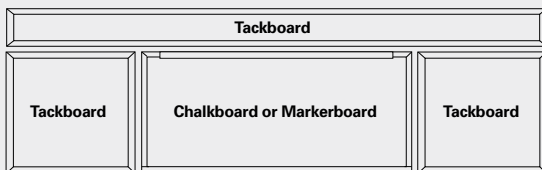
Type GR (Tackboard on Right)—Type GL (Tackboard on Left)



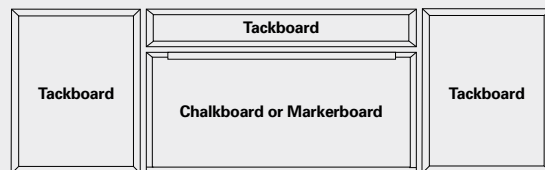
Type BR (Tackboard on Right)—Type BL (Tackboard on Left)



Type D



Type F



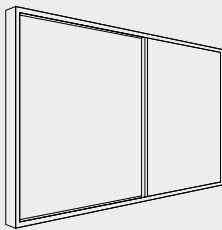
Type H

HORIZONTAL AND VERTICAL SLIDERS

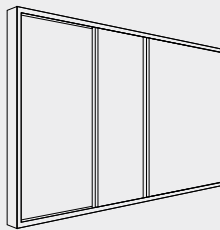
Horizontal and vertical sliding units present a unique method of installing additional writing surfaces where limited wall space occurs. Sliding panels move laterally or vertically in front of a fixed back panel to substantially increase writing area. For ease of operation, panels are top suspended and slide easily over the extruded aluminum track on nylon rollers.

Features:

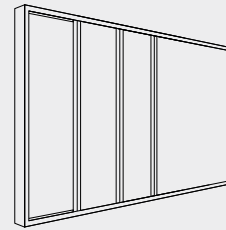
- Available in a wide variety of surface options and finishes
- Easy maintenance and operation
- Boards operate quietly



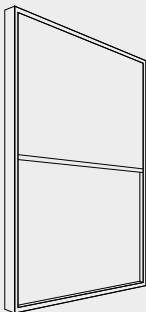
**SINGLE
HORIZONTAL
SLIDER**



**DOUBLE
HORIZONTAL
SLIDER**



**TRIPLE
HORIZONTAL
SLIDER**



**SINGLE
VERTICAL
SLIDER**



**DOUBLE
VERTICAL
SLIDER**



**MOTORIZED
SLIDER**

PERIMETER SCHOLARS
INTERNATIONAL



For more info
www.perimeterscholars.org
psi@perimeterinstitute.ca
Talk to us!

Courses

Thermodynamics
Statistical Physics
Condensed Matter
Field Theory I & II
Field Theory
Particle Physics

Review Courses

★ Standard Model
★ Condensed Matter
★ Quantum Foundations
★ Cosmology
★ Gravitational Physics
★ Quantum Gravity

★ Quantum Information
★ String Theory
★ Particle Physics

Explorations Courses

oo Condensed Matter
oo String Theory
oo Quantum Information
oo Cosmology
oo Particle Physics
oo Numerical Relativity



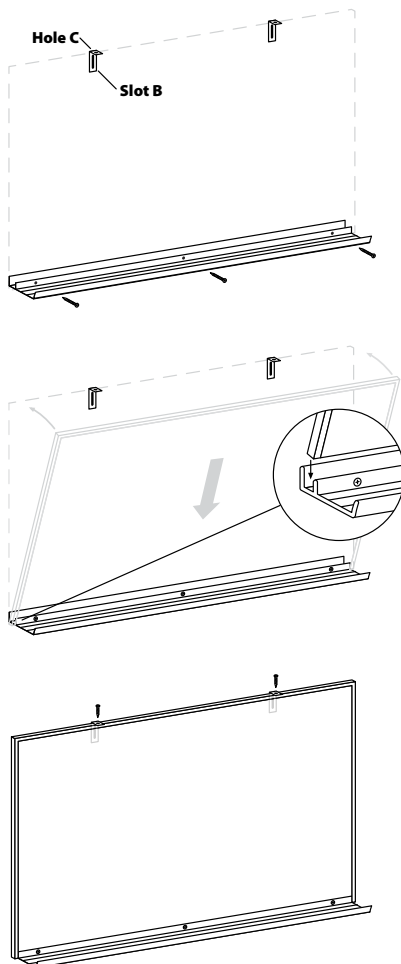
INSTALLATION

EASI INSTALL

All of our boards are available fully assembled but we also have a unique alternative. Using our innovative “Easi Install” system, you can save on shipping, handling, and installation. Mounting the tray directly to the wall first allows the installer the flexibility to anchor directly to the wall at 16" centers. Once up, the framed unit simply drops in the tray and is fastened at the top either through the map rail or using simple L clips.

- Boards lay flat for shipping and handling
- Allows distributors to stock 3 different styles of boards (*same board—3 optional trays*)
- Board is installed up to 10% faster
- Stronger installation
- No gluing required
- Easier handling

INSTALLATION



- 1** Fasten tray securely to wall (*provided loose*).
- 2** Remove clips from hardware kit.
- 3** Locate studs—if applicable—and fasten clips through slot B into studs (wall).
Note: larger boards may have 3 clips.
- 4** Set board in tray.
- 5** Tap down clips to sit on top of board. Using screws removed in step 1, fasten clips to board through hole C.
Note: screws are self drilling, use electric drill with Robertson #2 bit to install.

COAT RACKS

COAT RACKS

BAYCO

ASI Bayco Executive Coat Racks offer an attractive alternative to conventional coat and boot racks.

- All units are made with highly durable, clear anodized aluminum tubing and die cast brackets to provide exceptional strength and uniform appearance.
- Standard Installation* – Coat racks are designed to be wall-mounted, easily and economically.

CL-40 and **CL-50** closet units are ideally suited for interior closet and end wall applications, providing storage space for both garments and accessories.



B-10



B-10H



CL-40



CL-50

BAYCO COLOR SELECTION:



Bayco Anodize

Colors subject to change.

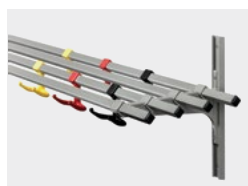
Actual colors may vary slightly from those shown due to limitations in the printing process.

**Optional freestanding units are available, with or without wheels.
For details, please contact us at 905.822.4287 or send an email to quotes@asigroup-canada.com.*

STUDENT LINE

ASI Student Line Coat Racks are constructed using the finest materials available to provide a system that is both strong and durable.

- Units are finished with a high performance electro statically applied powder coating to ensure years of worry-free maintenance.
- Solid impact resistant ABS hooks are available in 5 colors for use on various models.
- Hooks are spaced at 6" on center and each lineal foot of coat rack will provide 2 students with ample storage room.
- Standard Installation* – Coat racks are designed to be wall-mounted, easily and economically.
- Mounting heights can be easily changed to accommodate changing classroom requirements.



STL1001



STL2001



STL1000

STUDENT LINE RACK COLOR SELECTION:



STL - Black



STL - Gray

STUDENT LINE HOOK COLOR SELECTION:



Hook - Black



Hook - Red



Hook - Yellow

ENCLOSED CASES & TROPHY CASES



SLIDING GLASS BULLETIN DIRECTORY

Ideal frame type for larger units, this unit has 1/4" thick sliding glass doors and is able to be made in larger sizes without the need for a center mullion, offering a clean unobstructed view of the entire face of the board. The units are supplied with a ratchet lock and 2 keys. This unit is custom made to your choice of frame color and backing type.

Glass Enclosed Units:

- Available in all panel types
- Hinged and sliding glass doors available
- 1/8" acrylic glass standard on hinged units
- Full length piano hinge on hinged units
- All fastenings concealed within units
- 1/4" tempered glass standard on sliding door units



HINGED DOOR BULLETIN DIRECTORY

Our most popular and versatile frame type, the hinged door unit is available with a wide choice of glazing, and a cylinder lock and 2 keys are standard. Available in all frame finishes and background choices, the hinged door unit is custom made to your exacting specifications.



TROPHY CASES

Wall mounted trophy cases come standard with 2 adjustable glass shelves, locking sliding doors, and 2 keys. Available in 6", 8", or 12" deep melamine or laminate frame in a variety of wood grain exterior finishes, with Forbo®, Natural Cork, or FabricTac® background choices.

RAILS & ACCESSORIES

DISPLAY & MARKER RAILS

ASI offers an assortment of display rails from simple cork strips to the cleanliness of our unique KwikGrip® roller system. Each is available with a number of accessories—map hooks, roller brackets, or flag holders.



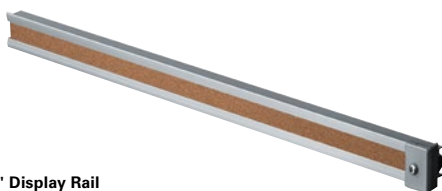
Flat Marker Rail



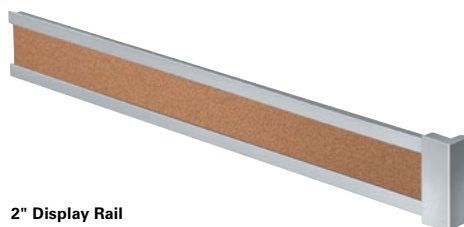
Angled Tray



KwikGrip® Display Rail

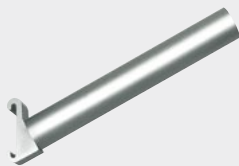


1" Display Rail

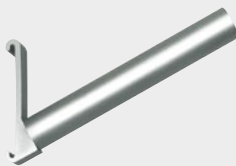


2" Display Rail

ACCESSORIES



Flag holder for
1" map rail



Flag holder for
2" map rail



Roller Bracket



Map hook for
1" map rail



Map hook for
2" map rail

WHO WE ARE

Only ASI Group designs, engineers, and manufactures fully integrated washroom accessories, partitions, lockers, and visual display products from one source.

The ASI Group is known for innovative products, speed to market, and the widest offering of materials and products

in the industry. Our family of companies work together with one mission in mind—"To make our customers successful by providing value that exceeds price and an excellent service experience."



1 Glendon College, Toronto, Ontario



TOILET PARTITIONS

ASI offers the most comprehensive collection of plastic, plastic laminate, powder coated, phenolic, and stainless steel partitions from one source



WASHROOM ACCESSORIES

The world's leading manufacturer of commercial washroom accessories. We offer the most comprehensive selection of washroom accessories available anywhere.

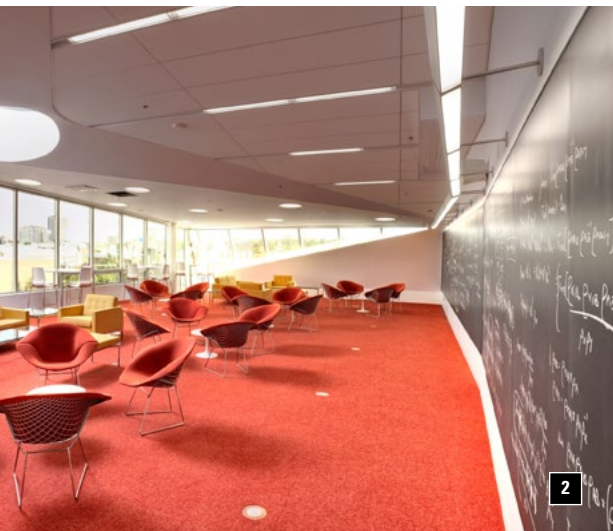


**WE ARE LASER FOCUSED ON DELIVERING EXACTLY WHAT YOU NEED—
WHERE AND WHEN YOU NEED IT.**

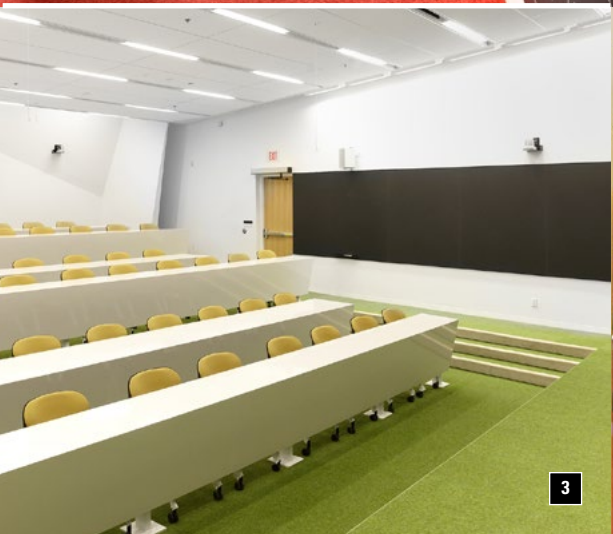
With operating units and offices in the USA, Canada, Australia, Belgium, UK, Middle East, and Mexico, along with sales in more than 50 countries, our ability to serve is not limited by geography.

Our broad scope helps meet the needs of healthcare, education, office, and retail buildings, as well as airports, stadiums, government offices, cultural centers, and hotel/restaurant operations.

SALES IN OVER 50 COUNTRIES **385+** DOMESTIC AND INTERNATIONAL SALES REPRESENTATIVES **1,000+** HIGHLY SKILLED EMPLOYEES **>1.3** MILLION SQ. FT. MANUFACTURING & OFFICE FACILITIES



2



3



4

2 Perimeter College: Sky Room, Decatur, Georgia

3 Perimeter College: Sky Room, Decatur, Georgia

4 Glendon College, Toronto, Ontario



STORAGE SOLUTIONS

A wide range of colors and materials including steel, solid plastic, and Compact HPL.

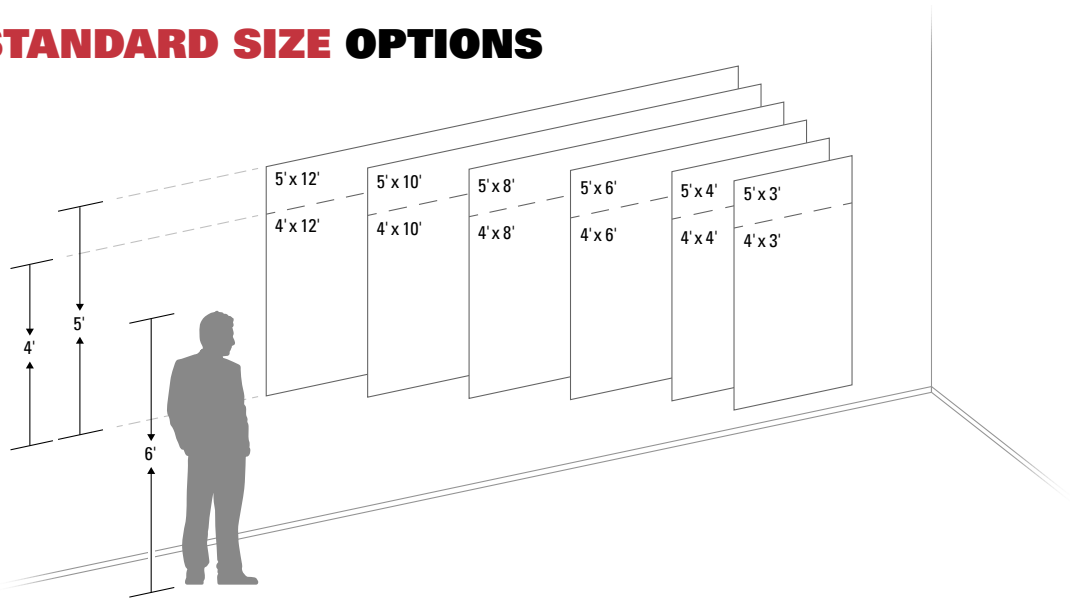


VISUAL DISPLAY PRODUCTS

Through constant research, innovation, and development, we design and manufacture high quality visual display products that are easy to install and require little maintenance.



STANDARD SIZE OPTIONS



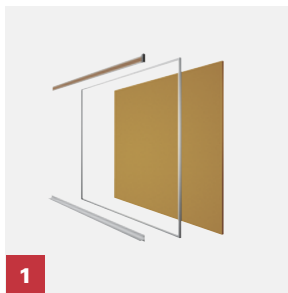
Sizes:	4' x 3'	4' x 4'	4' x 6'	4' x 8'	4' x 10'	4' x 12'	5' x 3'	5' x 4'	5' x 6'	5' x 8'	5' x 10'	5' x 12'
Porcelain	■	■	■	■	■	■	■	■	■	■	■	■
Glass	■	■	■	■	■	■	■	■	■	■	■	
Natural Cork*	■	■	■	■	■	■	■	■				
Fabric Tac®	■	■	■	■	■	■						
Vinyl Tac	■	■	■	■	■	■						
Forbo®**	■	■	■	■	■	■	■	■	■	■	■	

*Cork is also available in 4' x 105' rolls.

Boards larger than 5' x 8' are subject to longer lead times and availability.

**Forbo® is also available in 4' x 90' rolls or 6' x 90' rolls.

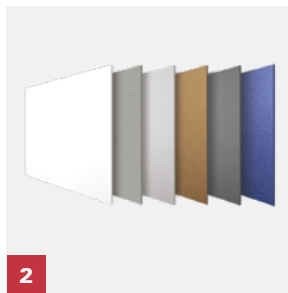
HOW TO ORDER



1

Pick your Frame

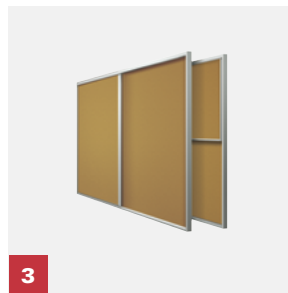
Choose a trim system that meets your aesthetic and performance requirements.



2

Pick your Surface

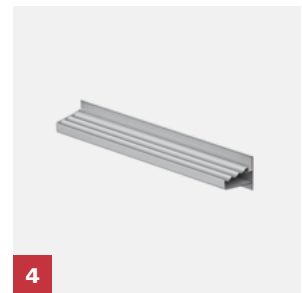
Select from a variety of writing and tackboard surface options.



3

Pick your Configuration

Select from vertical or horizontal sliding configurations and a wide range of accessories.



4

Pick your Accessories

Choose from a variety of display and marker rails, accessories, directories, cases, and mobile units.

SO WHY CHOOSE US? THE ANSWER IS **SIMPLE**

Only ASI Group designs, engineers, and manufactures fully integrated washroom accessories, partitions, lockers, and visual display products from one source.



Shipped In
48
HOURS

We are laser focused on delivering you exactly what you need—when you need it. Visit asi-visualdisplayproducts.com for details. No one beats our 48 hour delivery.

ASI Visual Display
Products

Distributed by
www.AmeraProducts.com
Phone: (800) 608-6548
Fax: (409) 840-5541
info@ameraproducts.com



10835D0321

Distributed by
www.Ameraproducts.com
Phone: (800) 608-6548
Fax: (409) 840-5541
info@ameraproducts.com